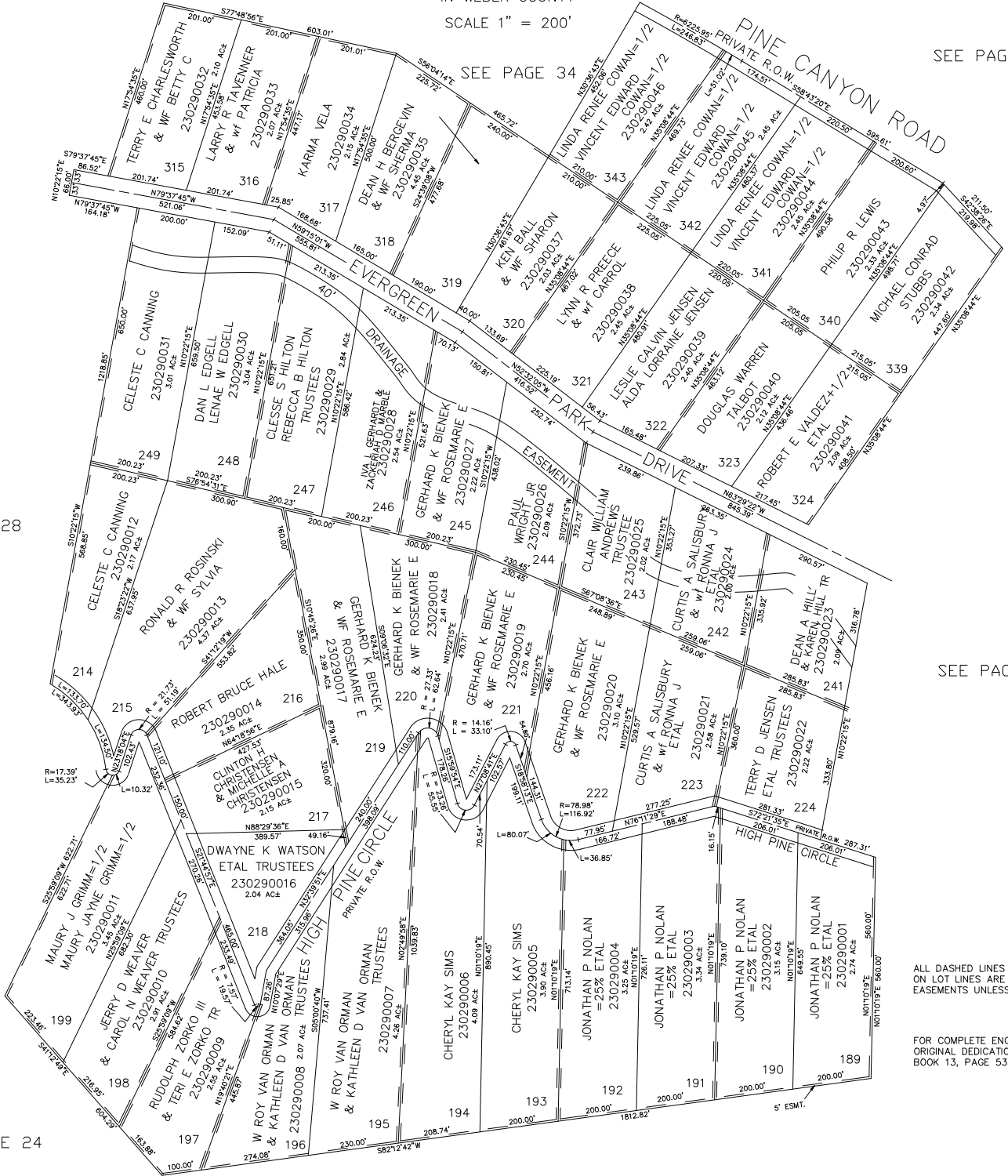


PART OF SEC. 32-33, T.7N., R.3E., S.L.B. & M.  
**EVERGREEN PARK SUBDIVISION NO. 1**  
 LOTS 189-199, 214-224, 241-249, 315-324, 339-343

TAXING UNIT: 58

IN WEBER COUNTY  
 SCALE 1" = 200'



SEE PAGE 36

SEE PAGE 34

SEE PAGE 28

SEE PAGE 30

ALL DASHED LINES SHOWN  
 ON LOT LINES ARE 10' UTILITY  
 EASEMENTS UNLESS OTHERWISE NOTED.

FOR COMPLETE ENG DATA SEE  
 ORIGINAL DEDICATION PLAT IN  
 BOOK 13, PAGE 53 OF RECORDS.

SEE PAGE 24

SEE PAGE 22